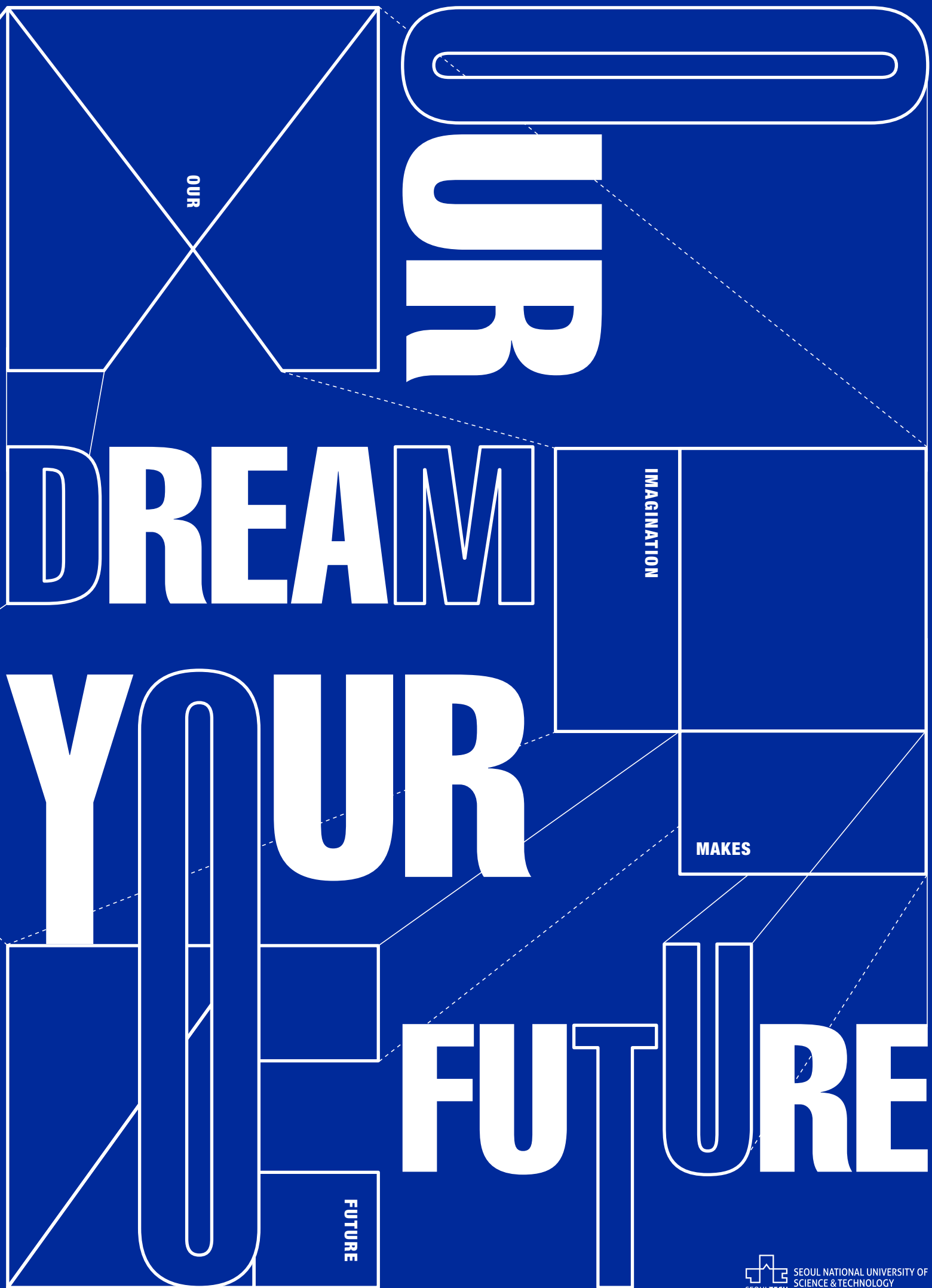




**Our Dream, Your Future**





OUR

DR

DREAM

YOUR

IMAGINATION

MAKES

FUTURE

FUTURE



SEOUL NATIONAL UNIVERSITY OF  
SCIENCE & TECHNOLOGY







**OUR DREAM  
YOUR FUTURE**

# Running Towards Our Dreams







**A campus with nature  
the students and**

**local community can  
enjoy together**

**A park-type campus in which nature and  
relaxation coexist**

Formerly the site of Seoul National University's College of Engineering, the SeoulTech Gongneung campus boasts one of the top five largest university campuses in Seoul. The campus is loved for its park-type design in which one can enjoy nature among ponds, trees, and greenery. The green campus area spans approximately 510,000 square meters at the foot of Buram Mountain. Campus development initiatives have been continuously carried out, maintaining natural streams and improving tree-lined streets to cultivate a beautiful and pleasant SeoulTech campus environment.

**Aggressive investment in education  
infrastructure**

After the completion of construction and renovation projects from 2008 to 2016, SeoulTech now boasts 12 new buildings. Following the construction of an athletic complex in 2014 that meets international standards, further construction was completed on the university's fourth dormitory, housing 900 students, in 2017, and the Techno Cube, valued at KRW 26 billion, in 2018. In 2020, SeoulTech also completed the construction of a new research center for innovative convergence (Sangsang Hall) with an investment of approximately KRW 100 billion in infrastructure development. The ratio of the capacity of university facilities to the number of students also doubled from 77% to 142%.

**Promoting student welfare facilities**

In addition to promoting a better campus environment, SeoulTech provides a variety of support facilities for students. In the Central Library, a spacious, 330-square-meter book cafe has opened. Furthermore, with a futsal court in accordance with international standards and multi-purpose athletic grounds, the university provides various leisure and sports facilities for students to enjoy. With the completion in 2015 of a residence hall for students preparing for certification exams, and a fourth dormitory in 2017, the university expects to be able to accommodate about 2,600 students in on-campus housing. This number accounts for 23% of the entire student body, one of the highest accommodation rates among universities in Seoul. Various facilities such as fitness centers, study spaces, and cafés are available in student residences.

**DREAM**

## Credible evaluations attest to

## the competence of SeoulTech, a top-tier national university

### Cultivating professionals for the Fourth Industrial Revolution

SeoulTech has always excelled at providing entrepreneurship education programs that nurture human resources for the Fourth Industrial Revolution. The 2021 JoongAng Daily University Rankings placed SeoulTech in 17th place nationwide and second place among national universities. In terms of student education and performance, SeoulTech stood out for entrepreneurship education (first place), and the percentage of students participating in field training (sixth place). In addition, it ranked fourth in terms of the ratio of scholarships to tuition in the educational environment category and fifth in publications by humanities and social sciences professors in the faculty research category.

### SeoulTech won eight government-funded initiatives and received two “A” grades in its performance evaluation

SeoulTech has been solidifying its position by winning large-scale projects based on its excellent performance in government-funded project selection and evaluation. The eight initiatives that the university has been carrying out are the University Innovation Support project, the fourth phase of the Brain Korea (BK) 21 initiative, the University Job Plus Center project, a project through which universities share innovation for nurturing digital human resources, a project to support universities that contribute to the normalization of high school education, a national university promotion project, the Lifelong Education at Universities for the Future

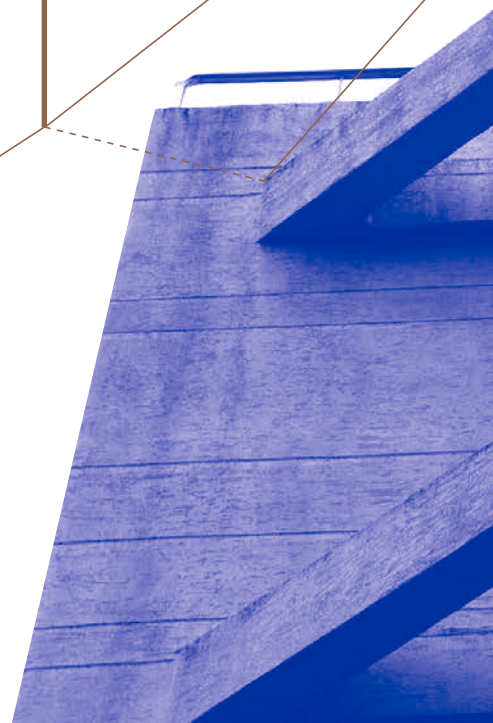
Education (LiFE) project, and a K-startup package support project. These projects all include installing up-to-date education and research facilities, providing scholarships, and operating outstanding education and research support programs. Notably, in 2021, SeoulTech earned an “A” grade in the performance evaluation by the Ministry of Education’s University Innovation Support Project and the National University Promotion Project.

### Grade A university in the performance evaluation of the MOE’s University Innovation Support Project

SeoulTech has received KRW 14.91 billion in government support over three years, promoting innovation in education based on “students’ self-directed graduation program design,” integration of an international dimension into research capabilities, and industry-university cooperation through an industry-university hub.

### SeoulTech listed in the QS World University Rankings

Since its first appearance in 2016, SeoulTech has maintained its spot in the QS World University Rankings, published by the British higher education research company Quacquarelli Symonds. In particular, the university is ranked #51-100 (first in Korea) in the “Engineering-Petroleum” category of the “QS World University Rankings by Subject 2021,” proving that it is among the best universities in Korea in terms of its educational and research capabilities.







**Looking  
Farther**

**GLOBAL**



**From  
Right Here**

**34**

**EDUCATION**



**With practical and applied  
leadership education,**

**SeoulTech cultivates talent  
that companies seek**

**Various employment and entrepreneurship  
programs**

SeoulTech has secured top positions in the annual rankings of employment and entrepreneurship rates with the assistance of the highly-regarded programs of the Office of Career Development and the operational competencies of the Center for Cooperative Education. The center helps students find jobs or continue their studies through participation in short-term, on-the-job training (short-term internships) of four to eight weeks or long-term training (co-ops) of four to six months. The Higher Education Graduates Employment Statistics of the Korean Educational Development Institute states that SeoulTech's employment rate in 2019 (survey date: December 31, 2019) was 66.2%, which was 2.9% higher than the average of 63.3% for four-year universities in Korea at the time. Notably, the entrepreneurship courses and special lectures and programs, designed to encourage youth entrepreneurship provided by the Center for Entrepreneurship Education under the SeoulTech Startup Support Foundation, laid the groundwork that has enabled SeoulTech to continually rank first in the "Entrepreneurship Education" category in the JoongAng Daily University Rankings since 2017.

**Entrepreneurship-related majors**

SeoulTech students can choose a minor or double major related to entrepreneurship. In addition, diverse programs designed to encourage youth entrepreneurship provided by the SeoulTech Startup Support Foundation teach practical skills that are useful for aspiring entrepreneurs. Furthermore, enthusiastic student entrepreneurs can utilize SeoulTech's entrepreneurship-friendly academic systems, which allow them to take a leave of absence or earn credit by starting their own businesses.

**One-Stop Entrepreneurship Acceleration  
Program**

SeoulTech aims to nurture creative and dedicated human resources for technology convergence by promoting entrepreneurship and strengthening entrepreneurial skills. To this end, the university operates the One-Stop Entrepreneurship Acceleration Program, which offers various courses for entrepreneurship training, activities, and commercialization. The program supports students in their efforts to become entrepreneurs capable of changing the world with their new ideas and novel approaches or creative talent with in-demand skills that allow them to find a high-quality job or start a business after graduation.

**ON**

## More opportunities for more students;

## Heading towards a larger world, together

### Generous scholarships

SeoulTech is one of the most generous Korean universities in terms of financial aid, awarding over 80% of its students with scholarships to help them focus on their studies. As of 2020, the annual awards amounted to KRW 32.6 billion, and the ratio of scholarships to tuition revenue was 62.6%, ranking SeoulTech fourth in terms of the ratio of scholarships to tuition in the 2021 Joong Ang Daily University Rankings.

### Diverse global network

SeoulTech has established an academic exchange network with 311 universities and 7 institutions in 61 countries, sending and receiving professors and students to and from places all over the world. In particular, the university offers a wide range of opportunities to study at universities abroad through various overseas scholarship programs, such as its international exchange scholarship.

### Global convergence programs

SeoulTech has been operating various international convergence programs by globalizing its strengths as an integrated specialization university. Specifically, the university offers various international dual-degree programs such as the Manufacturing System & Design Engineering (MSDE) and the Information Technology Management (ITM) degrees with the UK's Northumbria University and the Global Technology Management (GTM) degree with the USA's Montclair State University. SeoulTech also provides field-oriented curricula specialized for various fields of technology management.

# IMAGINA





32

***Our Imagination  
Creates Our Future***

**IMAGINATION**

## Values

**Diligence • Creativity • Cooperation**

## SeoulTech's

Three Educational Objectives

**Creativity, Humanities,  
and Experiential Major Education**

## Goals

2026-2030

**Become one of the Top 10 universities  
in the nation and  
the Top 300 in the world**

2022-2025

**Become one of the  
Top 15 universities  
in the nation**

2019-2021

**Become one of the  
Top 17 universities  
in the nation**

University Principles  
**Contributing to the nation  
and humanity  
as a global university**

**SLOGAN**  
**Our Dream,  
Your Future**

**VISION**  
**A creative  
SeoulTech that  
dreams for  
the future of  
humanity**

# 5 strategic directions and 15 strategic tasks

## Cultivate creative and convergence-oriented future leaders

- Establish a solid academic system that ushers in a new future
- Solidify EPIC core competency-based disciplines and extracurricular education
- Improve teaching and learning skills to nurture creative, convergence-oriented human resources

## Create world-class research outcomes through capacity building

- Attract outstanding students to nurture the next generation of academics
- Improve research capacity by stage through customized support
- Vitalize convergence research to secure growth engines

## Realize social values through global industry-university cooperation

- Enhance global branding by establishing a global platform
- Spread knowledge in the local community by strengthening industry-university cooperation
- Fulfill responsibilities as a national university by establishing a community-based lifelong education system

## Support students with tailored, data-based programs

- Promote student well-being with customized college life support
- Offer personalized career support to help people thrive at work
- Provide Fit-Stone entrepreneurship support to translate imagination into reality in the future

## Establish a university operation system for sustainable growth

- Form an open organizational culture to increase member happiness
- Enhance university competitiveness through experience-based administrative innovation
- Establish future-leading, next-generation infrastructure





College of Engineering

College of Information and  
Communication Engineering

College of Energy and Biotechnology

College of Art and Design

College of Humanities and  
Social Sciences

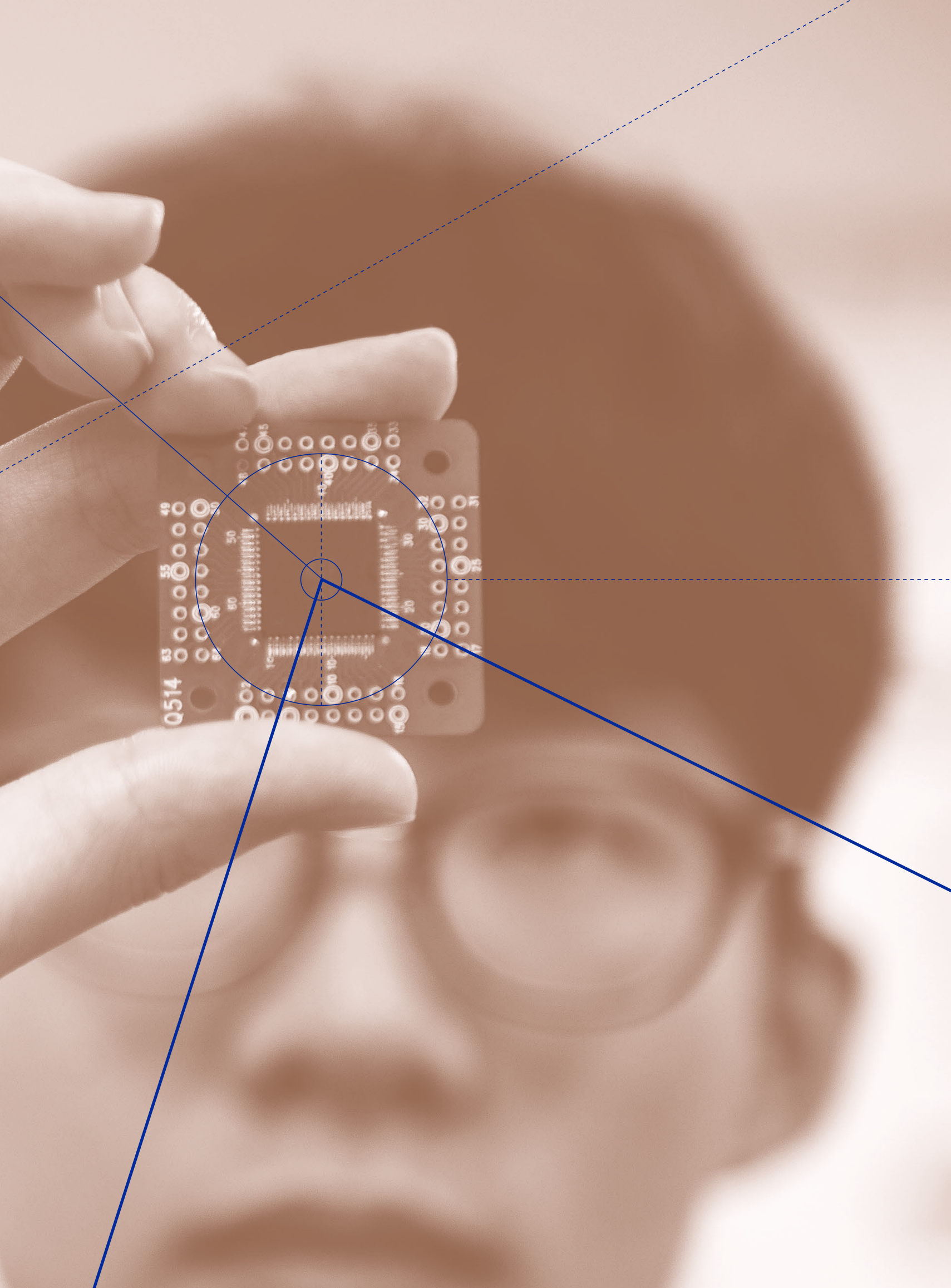
College of Business and Technology

College of Multidisciplinary  
Studies Toward Future

College of Creativity and  
Convergence Studies

# ACADEMICS COLLEGES









## College of Engineering

Aiming to educate talented individuals who will lead the future of science and technology, the College of Engineering strives to provide a practical education that cultivates creative thinking, problem solving, knowledge application, comprehensive design, research capacities, and adaptability to the globalized world. The College of Engineering broadly consists of mechanical and architecture/construction departments: one faculty (architecture), five departments (Mechanical System Design Engineering and four others), and one “agreed department”\* (Architectural Mechanics). In addition, one administration office and 40 employees cater to 139 professors and 5,000 students. So far, the college has produced about 40,000 graduates, who are leading the industrial and economic development of Korea as mid-level and top-level personnel in companies, research institutes, governments, and affiliated organizations.

\* A department established and operated by an industrial educational institution under an agreement pursuant to Article 8 (1) of the Industrial Education Enhancement and Industry-Academia-Research Cooperation Promotion Act



### Department of Mechanical System Design Engineering

With a strong foundation in the fundamentals of mechanical engineering, the Mechanical Systems and Design Engineering program covers a wide breadth of topics, including the fundamentals of mechanical engineering, professional know-how in product design, manufacturing technology, NT/IT/BT, electrical and electronics control, robotics, and computer and materials technology. Integrating knowledge from diverse fields, the program produces multi-disciplinary design engineers and researchers in fields such as mechanical and information technology, plant engineering, robotics, and transportation (automobiles/aviation/railroad) technology.

### Department of Mechanical and Automotive Engineering

Mechanical and Automotive Engineering consists of joint research in mechanical engineering, a general science, and automotive engineering, an applied science. Based on the fundamental studies on energy and production, the former involves the latest technologies employed in aircraft design, micro-scale precision machinery, and bio-machinery. Automotive engineering

seeks to develop green solutions for future automobiles and transportation systems, as well as for existing gasoline-powered vehicles. A thorough and extensive curriculum helps graduates take initiative in their relevant career fields.

### Department of Safety Engineering

Safety Engineering scientifically identifies potential risks that may emerge from daily industrial activities and effectively analyzes how risks develop into accidents, the severity of resulting losses, and various immediate measures to minimize damage. By addressing the above, the Department of Safety Engineering seeks to cultivate talent that can serve to secure safer environments in our daily lives.

### Department of Materials Science and Engineering

An indispensable discipline for any industrial growth, Materials Science and Engineering pursues a detailed understanding of the structure and properties of a given substance, followed by the development and application of new materials. Students explore theoretical bases and conduct experiments on novel materials like semiconductors and ceramics, placing a strong em-

phasis on research, development, and production. The department aims to foster professional engineers and researchers who can contribute to the research and development of new materials that are indispensable for the growth of industrial technology.

### Department of Civil Engineering

Civil Engineering at SeoulTech explores environmentally friendly and safe solutions in building urban infrastructure. While striking a fine balance between conservation and development, students are challenged to find economical, eco-friendly, and efficient measures to plan, design, construct, and maintain infrastructure. Through prominent faculty and education facilities, the Civil Engineering curriculum cultivates students with a strong basis in foundational theories, social responsibility, and creativity.

### Architectural Engineering Program, School of Architecture

Closely associated with one of the basic human needs, shelter, Architectural Engineering addresses the notion of creating space for people. This highly technical field of study places great importance on engineering education, while also examining the relevant expertise in both engineering and design. The School of Architecture offers high-quality lectures as well as practice and experiment sessions in the subjects of architectural structure, construction, environment, and equipment. Graduates are equipped with the skills not only to pursue their professional careers in construction, design, construction supervision, civil service, and research institutions but also to contribute to the development of the architectural industry.

### Architecture Program, School of Architecture

Established in 1910, SeoulTech's Architecture Program started as a construction curriculum under the Carpentry Department. The program was soon promoted to an independent department in 1912—the first of its kind in Korea. Unlike most universities in Korea that prefer a single architectural curriculum combining design and engineering, SeoulTech has embraced the separation of the two studies, offering separate architecture and engineering programs since 1991. In accordance with international standards, from 2002, the Architecture Program was transformed into a five-year curriculum and produced its first graduates in 2007. SeoulTech's five-year architecture program has been internationally recognized and continues to produce talented architects.





## College of Information and Communication Engineering

The College of Information and Communication Engineering was established with the educational goal of nurturing professionals capable of leading Telecommunication and IT convergence. To nurture students into professionals that society demands, the college has transitioned from the old structure of Electrical Engineering, Electronic Information Sciences, Computer Sciences, Media Engineering, and Control and Measurement Engineering to the current structure of three departments and two programs—Electrical Information Engineering, Electronic IT Media Engineering (Electronic Engineering Program, IT Media Engineering Program), and Computer Sciences. Based on the engineering theories required in today's information society, our college provides practical and critical education to foster talent that can demonstrate practical skills as well as creativity. Pursuing a demand-oriented engineering curriculum, the college aims to improve engineering education, thus cultivating professionals capable of contributing to various industries and public fields.

### **Department of Electrical and Information Engineering**

The Electrical and Information Engineering Program is designed to create the IT leaders of the 21st century. The program focuses on education and research of diverse subjects ranging from embedded systems and information communication to intelligent robots to power generation, transformation, and transmission technologies. Recently, the program has been expanding to include renewable energy development, display technology, and bioengineering. Highly regarded professors with significant industry backgrounds train high-level engineers with technical competence and character. With continuous efforts to contribute to society, the program constantly strives to expand its research areas and educational systems to respond flexibly to changes in the industrial environment.

### **Department of Electronic and IT Media Engineering**

Electronic and IT Media Engineering integrates Electronic Information Engineering and IT Media Engineering in order to foster talent that can take the lead in the high-tech IT industry. IT technology has changed virtually every aspect of modern society; in particular, a wide array of technologies and services are now starting to converge in electronics, telecommunication, broadcasting, multimedia, and internet technologies. In order to enable students to effectively respond to the

needs of an information-oriented society, the department promotes a thorough understanding of electronic engineering and media IT engineering. It also offers challenging, in-depth courses for each field with the overarching goal of nurturing highly competent researchers who can exhibit their strengths in developing cutting-edge technologies.

### **Department of Computer Science and Engineering**

With the goal of educating creative minds who can assume leadership roles in the ICT industry, the department offers courses in both computer software and hardware. The Department of Computer Science and Engineering specifically aims to nurture advanced personnel who can work in various fields involving computer sciences such as the development, operation, and maintenance of computer software and systems. Acknowledged by the Accreditation Board for Engineering Education of Korea, the department provides intensive computer science courses. Furthermore, Computer Science and Engineering students study software, a key area of the Fourth Industrial Revolution that can be represented by AI, big data, internet security, 5G, augmented reality (AR), and cryptocurrency. The department is an open environment for students to grow into the future leaders of a software-oriented society.







## College of Energy and Biotechnology

The College of Energy and Biotechnology consists of six departments: Chemical and Biomolecular Engineering, Environmental Engineering, Food Science and Technology, Fine Chemistry, Sports Sciences, and Optometry. Each department is based on an understanding of the traditional scientific fields of physics, chemistry, and biology. The college researches and teaches applied sciences closely related to everyday life and industry. Students in the College of Energy and Biotechnology will learn how to apply the basic sciences to realistic problems, practically applying knowledge from their respective majors. The college thus seeks to develop talent with solid scientific foundations and adaptability in their respective fields.



### Department of Chemical and Biomolecular Engineering

Chemical and Biomolecular Engineering is a field of study that analyzes ways to render the manufacturing of chemical and biological products more efficiently and economically. Students in the program study manufacturing economically design, construction, and operation. In recent years, the program has contributed greatly to the development of new and renewable energy, sustainable and clean manufacturing processes, and the production of key component materials for IT and biotechnology industries. Chemical and Biomolecular Engineering is expected to play a significant role in various industry areas including textiles, semiconductors, steel, automobiles, shipbuilding, aerospace, energy, environmental technology, and traditional plant engineering.

### Department of Environmental Engineering

The drawbacks of rapid industrialization are taking a toll on humankind in an unprecedented manner; countries are suffering from excessive energy consumption, exploding urban populations, and environmental degradation that includes water, air, and soil pollution. Such environmental challenges are garnering international attention as they are present everywhere across the globe. As abnormal temperatures, depletion of the ozone layer, and desertification deteriorate our environment, there is an imminent need to address these serious environmental issues. To this end, the Department of Environmental Engineering strives to cultivate environmental experts who will be able to promptly respond to these threats.

### Department of Food Science and Technology

While linking bodily phenomena to health, medical care, food, environment, and energy, the Food Science and Technology Department seeks to define sophisticated processes such as cell fusion and genetic modification. By doing so, the study identifies highly productive varieties, flavoring, and herbal ingredients, mitigating the potential risks found in food and agricultural security for the future. Also examined are the comprehensive aspects of human health, including the production, storage, processing, distribution, and consumption of foods. The curriculum enables graduates to adapt to the recent industry trends of globalization, information, and industrialization.

### Department of Fine Chemistry

The Department of Fine Chemistry was founded to help advance one of the nation's flagship industries by fostering experts who can effectively offer technological solutions and expertise required in this field. Fine Chemistry is a study that enhances the performance of raw materials by adding functions and values. Requiring precision technology in examining the molecular design and process, the study is applied to create products ranging from daily necessities to raw materials for high-tech solutions. Fine Chemistry is defined by the creation and synthesis of new substances. The applied products and areas include surfactants, aromatics, cosmetics, pigments, paint adhesives, macromolecules, pollution control facilities, and health and medical care.

### Department of Sports Sciences

The Department of Sports Sciences seeks to develop professionals who can contribute to the advancement of the sports industry and sports sciences—both of which are rapidly developing along with the growth of the social, cultural, and economic value of sports activities. The curriculum consists of practical content based on the humanities, social sciences, and natural

sciences to help develop theoretical knowledge, professional practice, and instructional skills. In addition, through a profound understanding and analysis of exercise mechanisms, the program cultivates the ability to understand and apply social, psychological, physiological, and management concepts regarding sports. By offering lectures as well as on-site training pertaining to fitness assessment, prescription, development, promotion, and management, the department seeks to foster competent experts with both theoretical expertise and field experience.

### Department of Optometry

The SeoulTech Optometry Department boasts one of the nation's top optometry programs. As an integrated science of increasing significance in the coming future, optometry looks into the science of vision correction. The department places equal emphasis on theoretical knowledge in optics, dissection, physiology, and materials for accurate vision correction as well as its clinical applications in treating visual dysfunctions, eye diseases, and refractive examinations. Leading figures of optical research, academics, and industry are proudly trained at SeoulTech.





## College of Art and Design

The College of Art and Design has been making great contributions to Korean culture by training designers and artists for the past 50 years. Future-oriented, the College of Art and Design aims to nurture talent in the field of art and design with domestic and global competence. Thus, the college promotes diverse educational specialization programs to nurture high-quality, creative individuals with a global perspective and creativity. Students and alumni have been making remarkable educational achievements in employment and entrepreneurship, in addition to winning various domestic and international competitions. Furthermore, the college was previously selected as the best institute for design studies by the Korean Council for University Education. In 2018, the College of Art and Design held international academic conferences for the Korean Society of Design Science and the Korean Design Trend Society respectively. Through international academic exchange programs with leading institutes around the world, the college is recognized both domestically and globally.



### Department of Design

The vision of the Department of Design, which seeks to systematically and creatively develop lifestyles based on high levels of creativity, intelligence, and sensibility, is to produce global design professionals. To this end, the department works to improve the quality of education it provides in line with globalization and offers various specialized classes.

### Industrial Design

The Industrial Design Program of the Design Department pursues the creation of lifestyles based on high levels of creativity, intelligence, and sensibility. The program uses design to enhance human life based on an approach that combines knowledge of science, humanities, and the arts as well as an integrated perspective of technology. The goal is to produce competent design professionals armed with science-based problem-solving skills, sensitive modeling capabilities, and the creativity that is essential to innovative design.

### Visual Communication Design

The Visual Communication Design Program of the Design Department is future-oriented, cultivating a rich sensibility and sophisticated thinking ability that correspond to the rapid changes and development of technology and information media. The department offers educational courses in which students learn how to adapt to the latest technology and information trends through various interactions in environments on and off campus. It also aims to foster active visual designers equipped with sensitivity and creativity.

### Department of Ceramic Art & Design

The 21st century is an era of culture and arts. In particular, ceramic art has been closely linked to humanity since prehistoric times. As such, deep research and creative work on ceramics are required in order to help enhance the quality of culture and environment. With a goal of cultivating leaders with productive and creative spirits in the field of ceramic arts, the Department of Ceramic Arts enables students to explore theories in-depth and develop creative art skills simultaneously to meet the demands of the changing times.

### Department of Metal Art & Design

The Department of Metal Art & Design seeks to culti-

vate professional and creative minds who will lead the 21st century in the fields of design. Intent on producing world-class designers of jewelry, cultural products, and metalwork, the department contributes to disseminating metalwork culture around the globe and advancing the industry. To this end, students in the department carry out coordinated and systematic research on the theory and technology of metalwork and jewelry design. Furthermore, the department promotes the creative development of metalwork and jewelry products by means of integrating traditions with cutting-edge production technologies.

### Department of Fine Arts

The Department of Fine Arts fosters creativity in students who can meet the demands of the future and foresee upcoming challenges through theory and practice sessions. Students experiment with conventional media such as drawing, sculpting, pressing, and high-tech media, which utilizes modern science and technology including video, animation, and photography. They are also given the opportunity to build logical thinking and expressive skills that are foundational to art theory. Such convergence education methods are intended to develop highly qualified artists and art professionals with progressive minds.



## SEOULTECH GLOBAL LOUNGE

UNIVERSITY MAGAZINE

UNIV



## College of Humanities and Social Sciences

Focusing on basic and applied studies, the College of Humanities and Social Sciences aims to provide not only purely academic research programs but also programs that explore practical applications of studies. With an autonomous and active education environment, students are encouraged to freely pursue their respective academic fields of passion. With the foundation of a strong liberal arts education in subjects such as history, philosophy, politics, economics, sociology, education, mathematics, and physics, the college aims to cultivate intellectual minds who can become leaders in our society.

### **Department of English Language and Literature**

SeoulTech's Department of English Language and Literature seeks to foster professional talent in their respective fields with an English proficiency that enables creative problem-solving, international competence, and open minds in the globalized 21st century. With a foundation in the humanities, the department's curriculum focuses on the intensive study of English language, literature and culture, education, and translation.

### **Department of Public Administration**

In modern society today, the administrative functions of central and local governments have shown a trend of segmentation and specialization due to the increasing role of information technologies. The Public Administration Department aims to provide students with professional administrative management abilities suited to the needs of society. The curriculum looks into not only the basic spheres of public administration such as human resources management, finance, and organizational management, but also professional fields with growing demand such as administrative computing, information management, technologies, education, welfare, and policy analysis.

### **Department of Creative Writing**

The Creative Writing Department is dedicated to fostering professionals who will play crucial roles in the information era of the 21st century, in which the industrial application of language and literature is in high demand. Students enrolled in the department are expected to hone their creative writing skills in poetry, novels, and script writing for theater, film, and television, as well as master the core foundations of the Korean language and Korean literature. Such studies can be applied in careers in advertising, broadcasting, publishing, and other areas.

### **School of Liberal Arts**

The School of Liberal Arts encompasses a wide range of general education courses in the humanities and social sciences, as well as mathematics and physics. Programs are centered on developing an understanding of history, philosophy, social sciences, and the fundamental aspects of academic competency. For engineering majors, mathematics and physics are also emphasized. The school consistently aims to enhance the quality of the core education for freshmen students through special seminars, tutoring, and course instruction according to level.







## College of Business and Technology

The College of Business and Technology was established with the aim of equipping students with a firm foundation of interdisciplinary studies to competently lead the nation's rising industries. The College of Business and Technology consists of the Department of Industrial and Systems Engineering and the Department of Business Administration. The Department of Industrial and Systems Engineering is further divided into the Industrial Information Systems program, the Materials Science and Design Engineering (MSDE) program, and the Information Technology Management (ITM) program. The department seeks to cultivate global talent with practical expertise and international competence in the integrated fields of management and engineering technologies. The Department of Business Administration is further divided into the Business Administration program and the Global Techno Management program. With a foundation in humanities, both programs not only explore conventional management studies but also promote the creative integration of management and research technologies. The MSDE and ITM programs are run in association with the UK's University of Northumbria, and the Global Techno Management program offers a dual-degree program with the USA's University of Montclair.



### Department of Industrial Engineering

Aimed at nurturing global leaders of the 21st century in which smart information technology carries unprecedented significance, the Department of Industrial and Systems Engineering is divided into two programs: the Industrial and Information Systems Engineering Program (IISE), and the IT Management Program (ITM). IISE program specializes in educating talent in IT and data science, business analysis, and production with the best faculty in the domestic industrial engineering field. With the goal of cultivating creative, convergent, and global engineers, the IISE program boasts the highest employment rates in key areas of the Fourth Industrial Revolution—engineering, electronics, and convergence technologies. The ITM program trains the next generation of global leaders in the fields of IT convergence technologies and management. The ITM program, whose lectures are in English, is dual-degree program offered in conjunction with the UK's Northumbria University. Students under these two programs will be awarded degrees from both universities upon completion.

### Department of MSDE

The Department of Manufacturing System and Design Engineering aims to produce professionals who will lead the design of smart production systems which are supported not only by traditional mechanical engineering but also by nanotechnology, information technology, and energy technology in the Fourth Industrial Revolution. The department's curriculum provides convergence education on electrical/electronic engineering, Nano-MEMS, and industrial engineering based on mechanical engineering, maximizing the effectiveness of learning. Another example of the department's efforts to nurture future global leaders is a collaborative venture with the UK's Northumbria University, which is the first dual-degree program offered in conjunction with an overseas university in Korea.

### Department of Business Administration

Divided into two programs (Management and Global Technology Management), the Department of Business Administration nurtures the next generation of global talent in business. With various international exchange and dual-degree programs, the department focuses on transforming students into highly competent global business leaders with theoretical expertise and decision-making abilities. The program provides English lectures in major courses to strengthen global capacities that prepare students for manufacturing, financial, services, and advanced IT industries around the world. In particular, the Global Technology Management program has a dual-degree program through which select students can study for two years at the University of Montclair in the USA.





## College of Multidisciplinary Studies Toward Future

The College of Multidisciplinary Studies Toward the Future educates students about theories and the practical application of studies. With the vision of contributing to social development and prosperity, the college seeks to develop talent with moral values and professional knowledge that meets the demands of society. Integrated curricula are offered for adult students or graduates of specialized high schools who seek a quality university education. The College of Multidisciplinary Studies Toward the Future is operated in a four-semester per year system to better meet the needs of our students' demanding schedules. Furthermore, the Triple Blended Learning (TBL) program was adopted as a way to maximize academic achievement. The TBL program combines two weeks of online expository classes, such as online classwork and video lectures, with one week of offline problem-solving classes. The program thus utilizes three layers of online, learning lectures and problem solving-sessions, 1.5 directional class participation through remote video, and interactive discussions during weekend and night lectures.



## Department of Multidisciplinary Engineering

### - Mechanical Convergence Engineering

Mechanical Convergence Engineering is an undergraduate major program that aims to produce creative convergence engineers through the study of various subjects (electrical and electronic engineering, information and communications, etc.) and new technologies, with a focus on mechanical engineering. To this end, students learn the basic theory of mechanical engineering in their second year before going on to take basic and applied design classes, such as product design, creative convergence design, and capstone design in their third and fourth years to develop design capabilities applicable to the industry. In addition, they take the department's required classes, including project management, plant engineering, and design engineering, which are to satisfy industry needs, as well as new convergence technologies (IoT, ICT, eco-friendly energy, etc.) for the Fourth Industrial Revolution. The goal of all of this is to produce competent and capable convergence engineers who can properly respond to new industries and technologies going forward.

### - Civil and Environmental Engineering

The Civil and Environmental Engineering major focuses on the planning, designing, construction, and supervision of social infrastructure related to roads, bridges, railways, tunnels, airports, harbors, waterways, and dams, as well as environmental work such as wastewater treatment, air pollution studies, and environmental influence assessment. Civil and Environmental Engineering is a foundational field of study that will lead the development of our communities by using cross-disciplinary research between similar fields. In addition, the Civil and Environmental Engineering major reflects the needs of the industry and cultivates creative experts with competence in integrated studies. Through an intricately designed curriculum, the department generates talent with both academic expertise and practical experience.

## Department of Multidisciplinary Social Studies

### - Health and Fitness

The Health and Fitness program pursues scientific and systemic knowledge to promote good health and help modern people maintain healthy lives and focuses on nurturing and producing professionals capable of catering to an aging population. As a multidisciplinary and practical major program, the Health and Fitness program systemically conducts research to meet the academic and occupational needs of society, in which

both the elderly population and public interest in health are increasing rapidly, ultimately realizing a healthy society. Students work hard to become professionals with expertise in disease prevention, treatment, rehabilitation, proper nutrition, stress management, physical activity/psychological counseling, and the science-based integration of physical activities into people's daily lives.

### - Arts and Culture

The Arts and Culture program focuses on the core values of industrialization in the culture and arts. Through both hands-on experience and theoretical knowledge, the department provides a well-rounded education on the creation, management, infrastructure, and innovation of culture and art. The program thus cultivates professional artists, managers, and researchers needed in creative industries such as art, crafts, and design.

### - English

In order to cultivate international cultural experts who will lead the 21st century, the English program conducts language education to develop proficient English ability. Students study language through liberal arts

content in the humanities, social studies, business administration, economics, and the arts. Simultaneously, grammar, reading, and listening are taught separately through general English classes. The department also offers intensive programs focusing on English and American classic literature, English education, and English-Korean translation.

### - Entrepreneurship and Venture Management

Entrepreneurship and Venture Management sets as its core values the development of professional managers equipped with creative thinking ability, international perspectives, and practical skills, which are essential for jobs in the knowledge era. To realize these core values, the department teaches various business theories such as organizational operation and people management; production and operation of goods and services; financial, marketing, accounting, and information management; international trade and business; and entrepreneurship.





## College of Creativity and Convergence Studies

In response to the changes brought on by the Fourth Industrial Revolution, the industrial structure is changing, with jobs being classified into specialized, smaller groups. Now is the time for learners in the 21st century to grow into professionals based on their knowledge of convergence and expertise in their major fields. Reflecting these demands of the times, the College of Creativity and Convergence Studies aims to nurture creative, convergence-oriented leaders for the Fourth Industrial Revolution. Intending to produce experts in artificial intelligence, which is an essential technology in the Fourth Industrial Revolution, the College of Creativity and Convergence Studies opened the Department of Applied Artificial Intelligence in 2020, offering full scholarships. Also, the departments of Semiconductor Engineering and Future Energy Convergence, which were added in 2021, help the college play an important role as a leader in cutting-edge academic fields. Going forward, the college will grow into a leader of convergence education at SeoulTech by developing various cutting-edge convergence education models that are sufficiently flexible to respond to the environmental changes brought about by the Fourth Industrial Revolution.



### Department of Applied Artificial Intelligence

Since its inception in 2020, the Department of Applied Artificial Intelligence has provided education on AI technology, ethics, and values related to machines in the era of rapidly advancing AI technologies. Students learn the basics and essential technologies of artificial intelligence in their first and second years before going on to take project-centered courses that allow them to create products and services based on their knowledge of AI, such as AI model development and AI service planning in the third year. This process produces work-ready AI professional graduates. In addition to experts in AI itself, the department nurtures experts in the application of AI in various fields by allowing students to pursue a double major in their areas of interest (software, machinery, robots, environment, electronics, semiconductors, biotechnology, new materials, design, architecture, chemistry, humanities, and business). It also provides enrolled students with scholarships for four years, various internship opportunities, and joint degree programs with other prestigious universities (The University of British Columbia, the University of Hertfordshire, etc.).

### Department of Semiconductor Engineering

The Department of Semiconductor Engineering covers cutting-edge artificial intelligent semiconductor devices, system-in-package technology, and especially heterogeneous integration. The department nurtures work-ready human resources who can lead the device development, design, and manufacturing processes and preemptively respond to the demands of the next-generation semiconductor industry. “Intelligent

semiconductors” are at the center of the rapid paradigm shift occurring in the fields of AI, 5G, IoT, autonomous driving, and other state-of-the-art technologies brought on by the Fourth Industrial Revolution. Going forward, the Department of Semiconductor Engineering will realize META (Meet, Theory, and Application) education, aiming to nurture the best intelligent semiconductor professionals both at home and abroad with global engineering capabilities by cultivating the ability to apply basic engineering knowledge and convergence thinking skills based on a variety of educational courses.

### Department of Future Energy Convergence

The Department of Future Energy Convergence produces leaders in global convergence who will spearhead the energy transition and development of cutting-edge energy technologies in the rapidly changing energy industry. In line with the growing demand in energy-related fields, especially in terms of the global energy transition, government energy policies (Green New Deal, etc.), RE100 initiative, and ESG management, the department focuses on cultivating convergence engineers with a macro perspective who can lead not only the field of energy engineering but also the entire energy sector by linking their engineering expertise in energy technology with literacy in social studies. The department focuses on the development of cutting-edge energy technologies (renewable energy, hydrogen, energy storage devices, etc.) to respond to climate change as well as the establishment of a sustainable energy sector by striving to produce high-quality graduates and future energy leaders.



**Graduate School**

- 1 Engineering
- 2 Science
- 3 Art and Physical Education
- 4 Humanities and Social Sciences

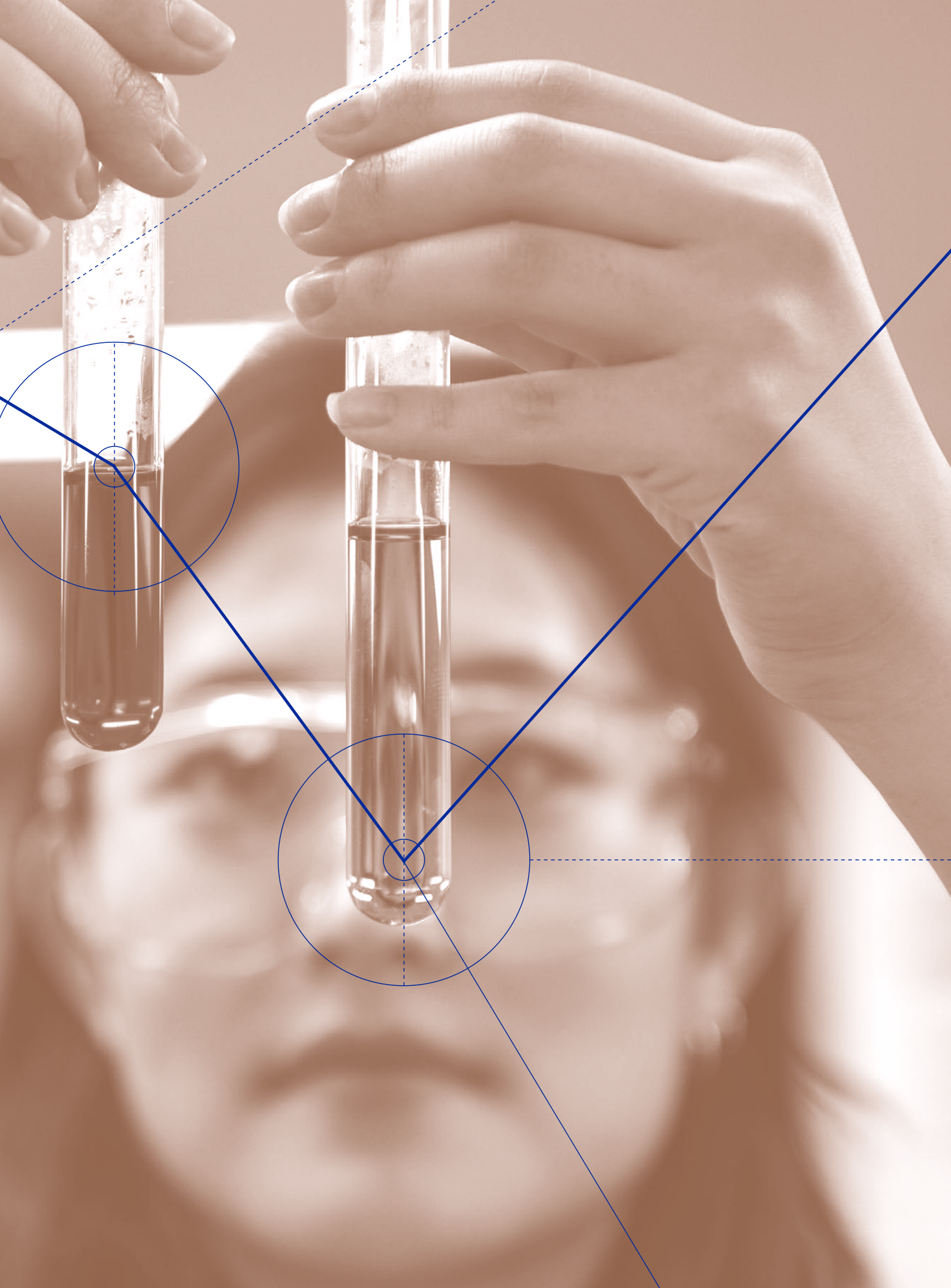
**Special Graduate Schools**

- 1 Graduate School of Industry
- 2 Graduate School of Housing and Urban Planning

**Professional Graduate Schools**

- 1 Graduate School of Railway
- 2 Graduate School of Public Policy and Information Technology
- 3 Graduate School of Convergence Science
- 4 Graduate School of Nano IT Design Fusion

# ACADEMICS GRADUATE SCHOOL









# Graduate School



Established in 2012 along with SeoulTech's transition to a general university, the Graduate School aims to cultivate global leaders with strong theoretical backgrounds and practical skillsets through bolstering research skills and establishing various academic networks. The school also gives back to society by encouraging faculty members to actively participate in national projects and partake in the growth of local industries and national competitiveness. The graduate school dedicates itself to the fostering of next-generation global leaders.

## M.S. and Ph.D. Programs in Engineering

- Mechanical Design and Robot Engineering
- Mechanical Engineering
- Safety Engineering
- Mechanical Information Engineering
- Data Science
- Materials Science & Engineering
- Automotive Engineering
- Civil Engineering
- Architecture
- Electrical and Information Engineering
- Electronic Engineering
- Smart City Engineering (Ph.D.)
- Applied Artificial Intelligence
- Semiconductor Engineering
- Energy Technology and Policy
- Computer Science and Engineering
- IT and Media Engineering
- Chemical Engineering
- Environmental Engineering
- Food Science and Technology
- MSDE (Manufacturing Systems and Design Engineering)
- Integrated IT Engineering
- Protection and Safety Engineering
- Convergence Institute of Biomedical Engineering and Biomaterials
- Nano Bio Engineering
- Smart Energy System Engineering
- New and Renewable Energy Convergence

## M.S. and Ph.D. Programs in Natural Sciences

- Fine Chemistry
- Optometry

## M.A. and Ph.D. Programs in the Arts and Physical Education

- Industrial Design
- Visual Design
- Ceramic Art
- Metal Art & Design
- Fine Arts
- Sports Science (M.S.)

## M.A. and Ph.D. Programs in the Humanities and Social Sciences

- Business Administration (M.S.)
- TESOL (M.S.)
- AI Business (M.S.)
- Creative Writing (M.S. and Ph.D.)
- Humanities-Based Management (Ph.D.)

# Special Graduate Schools



## Graduate School of Industry

Founded in 1989, the Graduate School of Industry is a special graduate school comprised of six integrated programs and three departments. Through active industry-academic cooperation, the school develops excellent researchers and delivers information to industry enabling students to acquire fast changing theories and knowledge. In an effort to help bright and talented individuals with financial need, the school offers top quality classes at an affordable price unmatched by any other graduate school.

### M.S. Programs in Engineering

- Global Safety Engineering
- Global Project Management
- Manufacturing Technology Convergence Engineering
- Civil Engineering
- Food Science and Technology
- Public Management and Technology Policy

### M.F.A. Programs in the Arts

- Craft Design Culture

### M.B.A. Programs in Business

- Technology Entrepreneurship MBA
- Department of AI Management and Policy

### M.S./M.B.A. Programs in Business

- Big Data AI Management Information

## Graduate School of Housing and Urban Planning

The Graduate School of Housing was established as a special and professional school in 2001 by integrating the expertise and technology of the Korea Land & Housing Corporation and SeoulTech's long experience in education. The Graduate School of Housing offers top-notch education to students in the form of research and field studies, not to mention thorough theoretical foundations. The school pursues continuous improvement in its education and research environment by means of inviting housing experts as adjunct professors and utilizing state-of-the-art facilities and equipment.

### M.S. Programs in Engineering

- Built Environment and Building Service Engineering
- Architectural Engineering
- Architecture

### M.B.A. Programs in Business

- Housing and Urban Management

### M.S./M.A. Programs in Public Administration

- Urban Planning & Real Estate Development



# Professional Graduate Schools

## Graduate School of Railway

The Graduate School of Railway is a special institute based on the organic cooperation amongst industry, academia, and research centers with the objective of supporting researchers to develop world-class, original, and core technologies necessary to take the railroad industry to the next level. The school is managed in conjunction with the Korea Railroad Research Institute, the nation's only comprehensive research facility dedicated to railroad studies. Through conducting joint research projects and providing training courses regarding culture, service, management, and practical work skills, the Graduate School of Railway cultivates talent that can develop new technologies and improve the industry.

<b>M.S. and Ph.D. Programs in Engineering</b>	<ul style="list-style-type: none"><li>• Railway Vehicle Systems Engineering</li><li>• Railway Electrical and Signal Engineering</li><li>• Railway Construction Engineering</li></ul>	<ul style="list-style-type: none"><li>• Railway Stability Engineering</li><li>• Global Railway Systems (Contract Department)</li></ul>
<b>M.S. and Ph.D. Programs in Business</b>	<ul style="list-style-type: none"><li>• Railway Management and Policy</li></ul>	

## Graduate School of Convergence Science

As the nation's first professional graduate school dedicated to energy and environmental studies, the Graduate School of Convergence Science is designed to develop talent with expertise in the areas of energy production and distribution, renewable energy development, energy efficiency, and respective policy development—thus addressing energy issues at a societal and national level. In order to nurture highly competent experts with a strong theoretical background and the capability to apply theory in the field, the school provides various opportunities to learn from prominent faculty members with years of field and research experience.

<b>M.S. and Ph.D. Programs in Engineering</b>	<ul style="list-style-type: none"><li>• Energy and Chemical Engineering</li><li>• Energy and Environmental Engineering</li></ul>	<ul style="list-style-type: none"><li>• Energy System Engineering</li><li>• Environmental Safety and Technology Convergence (Contract Department)</li></ul>
<b>M.S. and Ph.D. Programs in Economics</b>	<ul style="list-style-type: none"><li>• Energy Policy</li></ul>	

## Graduate School of Public Policy and Information Technology

Developed under the objective of fostering the best IT professionals, the Graduate School of Public Policy and Information Technology has put into practice the Academic Advisor Program which is led by an outstanding roster of faculty members. The school aims to foster professional researchers and top managers who will serve as vanguards of public policies, industrial information systems, broadcasting, and multimedia. The school challenges students to carry out self-motivated research and develop problem-solving skills through a convergent education which connects theory with hands-on experience and case-oriented studies.

<b>M.S. and Ph.D. Programs in Engineering</b>	<ul style="list-style-type: none"><li>• Industrial Information Management</li></ul>	
<b>M.S. and Ph.D. Programs in Policy Studies</b>	<ul style="list-style-type: none"><li>• Public Policy</li><li>• Digital and Cultural Policy</li><li>• Broadcasting and Communication Policy</li></ul>	<ul style="list-style-type: none"><li>• Broadcasting and Communication Policy (Contract Department)</li></ul>

## Graduate School of Nano IT Design Fusion

The Graduate School of Nano IT Design (NID) Fusion Technology was established to create new values for the country's growth engine, to realize future-oriented convergence education, and to nurture the next generation of global leaders who are suitable for knowledge-based and creative industries. As such, the school strives to become a front-runner in convergence industries, seeking integration among industry networks and strengthening growth engines. As the convergence trends in Nano Technology (NT), Information Technology (IT), and Design Technology (DT) are expected to grow, the Graduate School of NID Fusion Technology will serve as an engine to usher in a new ubiquitous society—driving future industries forward and advancing various sciences and technologies.

<b>M.S. and Ph.D. Programs in Engineering</b>	<ul style="list-style-type: none"><li>• Nano and IT Fusion Studies</li></ul>	<ul style="list-style-type: none"><li>• Broadcasting and Communication Fusion Studies</li></ul>
<b>M.S. and Ph.D. Programs in Design</b>	<ul style="list-style-type: none"><li>• IT and Design Fusion Studies</li></ul>	<ul style="list-style-type: none"><li>• Design and Engineering Studies</li></ul>

### Facilities

- 1 University Libraries
- 2 Office of Disaster and Safety Management
- 3 Center for Information Technology
- 4 Student Housing
- 5 Center for Research Facilities
- 6 Office of Strategic Initiatives

### Affiliated Organizations

- 1 Center for Press and Broadcasting
- 2 Office of International Affairs
- 3 Center for Continuing Education
- 4 University Museum of Art
- 5 Center for Human Rights
- 6 Startup Support Foundation
- 7 Office of Career Development
- 8 Support Center for Students with Disabilities
- 9 Center for Career Support
- 10 Center for Student Counseling
- 11 SeoulTech Community Engagement and Social Change Corps
- 12 Center for Cooperative Education

### Office of Educational Innovation

- 1 Division of Educational Innovation
- 2 Innovation Center for Engineering Education
- 3 Center for Research in Educational Policy
- 4 Center for Teaching and Learning
- 5 Center for Research in Liberal Arts Education

### Foundations and Other Campus Organizations

- 1 Research and Industry-University Cooperation Foundation
- 2 SeoulTech Foundation
- 3 Reserve Officers' Training Corps
- 4 SeoulTech Holding Co., Ltd.
- 5 Convergence and Open Sharing System Center



# CAMPUS LIFE







# Facilities

## University Libraries

In April 1910, the SeoulTech Central Library began as a book storage space for the Eoeu-dong Public Vocational Continuing School and was established as an official library in March 1963. The library was then renovated into the Central Library, which opened in 2005 and has continued to evolve to the library it is now. The library has domestic and foreign books, serial publications, and audiovisual materials as well as diverse contents such as academic databases, electronic journals, e-books, and video lectures. In response to changing educational and academic environments and user needs, the library has also been developing various programs and raising service quality. In particular, the library has been divided into the Central Library and the Library Annex buildings for purposes of specialization. The Central Library is ‘a ubiquitous library’ designed to lead information collection in the knowledge-based society of the 21st century. Academic support services, various solutions for students’ employment, and lecture videos are provided. In addition, the Central Library has implemented integrated information

retrieval services, search support services, and one-stop user integration services—thereby helping school members access more resources in an easier way. The Library Annex provides comfortable study and rest spaces consisting of a lounge on the first floor, a 24-hour reading room with 300 seats, a group study room, a computer room, and storage lockers.

Information	
Total floor space	14,177.36m <sup>2</sup> (4,207pyeong)
Seats	2,205 seats
Number of books	780,000 books
Serial Publications	411 types
Electronic information center	74 academic digital libraries
Library Agreement Organization	National Assembly Library and others

## Office of Disaster and Safety Management

The Department of Disaster and Safety Management strives to ensure that all members of SeoulTech live in a safe and pleasant research environment. The department has established a systematic and efficient system for safety management and potential disaster response, thus ensuring the safety of the university community. Furthermore, the department provides various information for campus safety such as laboratory safety modules, fire safety modules, and facility management protocols. Through regular safety education and training, the department fosters a culture of safety across campus.

## Center for Information Technology

Intended to facilitate university education, industry-academic research, and administrative procedures, the Information & Computing Center, as a critical department, is responsible for all IT affairs ranging from the management of on/offline campus networks and the general administrative information system to the oversight of public-domain software security and the





university intranet. To this end, the center plans and pushes forward major IT projects and helps community members improve and strengthen their IT skills. The

center is also in charge of implementing policies that guarantee the efficient use and protection of information resources and the adoption of new IT technologies. Moreover, it actively participates in various on and off campus activities in an effort to resolve information technology issues.

### Student Housing

Student Housing operates six buildings (Boram Dormitory, KB Dormitory, Sunglim Dormitory, Soolim Dormitory, Noori Dormitory, and SeoulTech Academy House) and several guest rooms. A total of 2,565 students are housed in single, double, or four-bed rooms. This includes 1,410 Korean males, 1,045 Korean females, and 110 international students. Student Housing also offers various amenities including seminar rooms, sound-proof rooms, a gym, convenience stores, and cafés.

### Center for Research Facilities

The Laboratory Center efficiently operates, manages, and utilizes high-tech laboratory facilities and equipment for educational and research purposes.

Contributing to the quality of education through diverse experiment facilities, the center is responsible for developing plans for lab management such as securing lab equipment, planning experiment budgets, ensuring lab safety, and improving experiment environments.

### Office of Strategic Initiatives

The Office of Strategic Initiatives analyzes the internal and external conditions and situations of SeoulTech to set a mid to long-term developmental direction for which strategic projects can be initiated in order to further progress into a globally renowned university. The office is also engaged in various external evaluations such as university basic competency diagnosis, university institution evaluation certification, university rankings by media, world university rankings (QS Rankings, THE Rankings, etc.), and university evaluations from an industry point of view. This allows SeoulTech to preemptively respond to demand for changes in the function and role of the university in line with an ever-changing society.

## Affiliated Organizations

### Center for Press and Broadcasting

Established on November 25, 1963, the campus press now distributes over 7,000 copies of a biweekly, 12-page student newspaper. Online access is also provided around the clock. Every November, the office hosts writing contests to foster students' literary spirits. Founded in 1985, the broadcasting center officially opened in 1987 with a strong determination to seek voices for justice and truth on campus. A 60-minute radio program is broadcast twice a day, and a 90-minute video program is broadcast three times a day on campus, five days a week. Real-time announcements regarding school events are broadcast as well. A broadcasting festival is held every year, promoting open communication and cultural exchange among students.

### Office of International Education

The Office of International Education is leading

SeoulTech's efforts toward globalization in education. The office attracts international students, offers various international programs, promotes sisterhood ties with overseas universities, and supports students and professors engaging in exchange programs in order to secure SeoulTech's competitiveness in terms of the creativity, internationalization, and globalization required by the knowledge-based society of the 21st century.

### Center for Continuing Education

The Center for Continuing Education promotes lifelong education by providing various social educational opportunities in line with the knowledge/information age, helping local residents improve their personal, social, and professional lives as much as possible.

### SeoulTech Museum of Art

The SeoulTech Museum of Art introduces the trends of

contemporary art through various exhibitions. Established in 2013 to cultivate creative talent by strengthening competence in culture and the arts, the museum is a space where diverse fields converge, providing cultural experiences to the campus community as well as general audiences.

### Center for Human Rights

The SeoulTech Center for Human Rights seeks to protect the human rights of our students and operates multiple activities such as preventative education and campaigns in order to promote a gender-equality-focused campus culture. Moreover, if a student's rights are infringed upon or sexual harassment or sexual violence incidents occur within the university, investigation procedures and measures are taken while protecting community members from further violence. The center supports tasks necessary to secure the rights of members such as counseling on gender issues, requesting treatment and education from specialists, and other support services.

### Startup Support Foundation

The Startup Support Foundation teaches aspiring

entrepreneurs, from among students, alumni, faculty members, and the general public, how to start their own business, including taking a product from concept to market and attracting investors. To ensure sustainable growth, the foundation makes the most of government projects that support curricular and extra-curricular activities (startup clubs, competitions, etc.) and entrepreneurship. To this end, it operates centers in four areas: entrepreneurship education, technology commercialization, business incubation, and makerspaces.

#### 1 Center for Entrepreneurship Education

With the aim of nurturing creative leaders for Korea's national development in the 21st century, the Center for Entrepreneurship Education offers courses that teach entrepreneurship and relevant capabilities while striving to spread a startup culture throughout the university based on an entrepreneurship-friendly academic system.

#### 2 Center for Technology Commercialization

The Center for Technology Commercialization operates various non-credit programs to accelerate entrepreneurship on campus and identifies aspiring entrepreneurs and helps them bring their great ideas to market using government support projects. The center discovers and fosters more than 50 startups every year through the K-Startup Package Program of the Ministry of SMEs and Startups.

#### 3 Center for Business Incubation

The Center for Business Incubation provides aspiring entrepreneurs with promising ideas and/or technologies with spaces, facilities, and startup programs to ensure their business success. It also operates "Soho Rooms," which are for solo entrepreneurs who are about to start a business. The center promotes the growth of startups by establishing a support system tailored to the steps of the startup life cycle, from preparation to execution and attracting investors.

#### 4 Center for Makerspaces

With the aim of facilitating the production of high-quality prototypes, the Center for Makerspaces provides the infrastructure necessary to turn ideas into products. The center offers a makerspace environment that gives users a high probability of success, where support is available at any time for whoever wants to become a maker.

#### Office of Career Development

The Office of Career Development operates courses based on work skills (designing career paths for employment/entrepreneurship) to help students enhance their work-related capabilities and effectively prepare for employment. Its various programs focusing on cultivating basic vocational skills help students find the right businesses and establish strategies for forging successful career paths.

#### Support Center for Students with Disabilities

The Support Center for Students with Disabilities strives to provide practical support for students with disabilities in consideration of their individual needs, improving their lives as students and aiding them in their studies. The center offers a variety of support services for such students in the form of accessible facilities, transportation support, individual assistance support, various academic assistive equipment and technology, course registration support, counseling, and employment information support while operating programs that promote a better understanding of disabilities and raise awareness.

#### Center for Career Support

The Center for Career Support aims to help students establish a strategy and build a successful career path. To that end, the center offers career counseling that helps students settle questions and resolve difficulties in career-related decision-making during

their university years, career aptitude tests that identify work-related interests and aptitudes, and career development programs tailored to each major.

#### Center for Student Counseling

The Center for Student Counseling offers not only individual counseling but also group counseling, psychological evaluation, and medical expense support for students' healthy and happy school life, successful adaptation, and ultimate growth.

#### SeoulTech Community Engagement and Social Change Corps

The SeoulTech Community Engagement and Social Change Corps was established in 2019 to foster students' growth as healthy, democratic citizens under the university's educational philosophy of "contributing to the nation and humanity as a global university." The Corps carries out various social service activities such as volunteering at home and overseas, volunteer club activities, and volunteer courses. It also performs tasks such as management and recruitment of external service organizations and groups, development of social service programs, and provision of education, research, and information related to social services.

#### Center for Cooperative Education

The Center for Cooperative Education operates a program that combines short and long-term on-the-job training courses and connects excellent students with competent businesses. The program satisfies the needs of both students and businesses by enabling students to develop job-related skills and businesses to utilize a highly motivated, quality workforce. The center also holds an essay contest for program participants to share their experiences and encourage qualified peers to participate in training opportunities.

## Office of Educational Innovation

In January 2021, the University Education Innovation Center was reorganized to form the Office of Educational Innovation in an attempt to respond to the Fourth Industrial Revolution by preparing a flexible education system where students can pursue their dreams and discover career paths while learning new disciplines and acquiring knowledge. Under the office are the Division of Educational Innovation, Center for Research



in Educational Policy, Center for Teaching and Learning, Innovation Center for Engineering Education, and Center for Research in Liberal Education.

#### **Division of Educational Innovation**

The purpose of the Ethic, Practicality-ideal, and Creativity (EPiC) system of SeoulTech is to nurture competitive human resources that can meet the future needs of society by exposing students to diverse learning experiences. The Discovery Semester supplements any learning activities that are lacking during the regular semester while expanding the depth and breadth of students' learning. Meanwhile, to expedite convergence education, SeoulTech operates majors designed by students and provided through convergence or connection between two or more departments.

#### **Innovation Center for Engineering Education**

The Innovation Center for Engineering Education operates 11 programs under the engineering education accreditation system adopted in 2005. The center was selected for the Engineering Education Innovation Cen-

ter Support Project (innovation/hub project) organized by the Ministry of Education, Science and Technology from 2007 to 2014, during which time it achieved outstanding performances each year. Since 2015, when the Korea Institute for Advancement of Technology, under the Ministry of Trade, Industry and Energy, took over as the organizer, the center has played a pivotal role in the development of engineering education by nurturing the personnel required by companies and supporting innovative projects of university participants.

#### **Center for Research in Educational Policy**

Based on the established system for measuring and evaluating educational performance, the Center for Research in Educational Policy operates a management system for nurturing human resources who have the qualifications and competencies desired by SeoulTech. To this end, the center establishes and studies educational policy, manages the quality and performance of education, and improves the curriculum.

#### **Center for Teaching and Learning**

The Center for Teaching and Learning develops services for teaching and learning and serves to improve effective teaching methods. Through e-Learning services, the center aims to provide educational services to students anytime, anywhere. Functions of the center include building and utilizing various systems for teaching and learning in the age of information. The Center for Teaching and Learning thus strives to offer more satisfying, high-quality educational environments through developing educational opportunities and sharing e-learning contents such as MOOCs.

#### **Center for Research in Liberal Arts Education**

The Center for Research in Liberal Arts Education promotes the development of undergraduate education by managing and improving the liberal arts curriculum with the aim of cultivating students' creativity, innovative spirit, and communication skills in the global era. The center also integrates and operates extracurricular programs conducted by various institutions on campus to improve the quality of education.

## **Foundations and Other Campus Organizations**

#### **Research and Industry-University Cooperation Foundation**

Since its inception in September 2003, the Research and Industry-University Cooperation Foundation has played a central role in industry-education cooperation while also expanding its scope to strengthen the competitiveness of SeoulTech through the revitalization of industry-university-research cooperation and actively responds to the transition toward a knowledge-based society. In particular, the foundation focuses on supporting joint studies, laying the groundwork for cooperation, and creating networks among industries, universities, and research institutes.

#### **SeoulTech Foundation**

The SeoulTech Foundation, established in April 1994, carries out various fundraising activities targeting university members, alumni, and businesses to enable the university's continuous development. The funds raised are used for scholarships, facility expansion, books, and research equipment.

#### **Reserve Officers' Training Corps**

Offering numerous benefits, the Army and Air Force ROTC programs provide a special opportunity for young university students who are keen to determine their own future. While on duty, students can accumulate field experience in their specialties as commissioned officers.

#### **Convergence and Open Sharing System Center**

The Convergence and Open Sharing System Center is dedicated to nurturing human resources skilled in new technologies by bridging the educational gap between regions and universities and establishing a national-level system for skilled personnel in the high-tech industry.

#### **SeoulTech Holding Co., Ltd.**

Since its inception in June 2018, the SeoulTech Holding Company has played a pivotal role in enhancing industrial cooperation by investing and nurturing subsidiary companies based on SeoulTech's creative assets.







# **A highly-ranked university among employers, a university that parents trust, and a source of pride for students.**

SeoulTech was established as the Public Eoeuidong Vocational Supplementary School in April 1910 and has, for the past 112 years, served to cultivate practical professionals trained in both practice and theory by offering a place for education and research in order to contribute to society and the nation.

As a result, we have grown to become one of the best national universities in Korea and place in the top rankings among national universities according to numerous university evaluations. In 2012, after becoming the only national general university located in Seoul, we have continuously developed our capabilities as a higher educational institution that provides top academic experiences in the sciences, humanities, and arts.

In the 2021 JoongAng Daily University Rankings, SeoulTech ranked first in the student entrepreneurship rate, fourth in the ratio of scholarships to tuition, and sixth in the percentage of students participating in on-the-job training, in addition to other distinguished honors it achieved in other areas. We will continue striving to develop as a university that contributes to the nation and a global university that forges the dreams of the future of humanity. We will also create a practical and structurally sound academic environment which we can grow into a successful national university alongside the local community, promote fusion and convergence education that transcends academic fields, and support the entrepreneurial efforts of our students and faculty.

I thank the many individuals who have supported SeoulTech and hope that you will continue supporting us as we further contribute to the nation and the local community. Through communication and service, we will continue to dedicate ourselves to maintaining a university that is ranked highly among employers, a university that is trusted by parents, and a university that is a source of pride for students.

**SeoulTech President Lee Dong Hoon**

# SEOUL TECH

## The 112 years of SeoulTech's history

encompasses the very  
academia and education  
that spearheaded the  
industrialization of South  
Korea.

# HISTORY

## HISTORY OF SEOULTECH

# 1910

### 1910.04.15

- Founded as Eoueu-dong Public Vocational Continuing School

### 1931.03

- Reorganized into Gyongsung Public Vocational School and relocated to Ahyun-dong

### 1944.03

- Reorganized into Gyeonggi Public Technical School

### 1953.04

- Renamed as Gyeonggi Technical High School

### 1963.03

- Renamed as Gyeonggi Technical Special High School

### 1974.03

- Renamed as Gyeonggi Technical School

### 1979.03.20

- Reorganized as Gyeonggi Technical University (with a night school)
- Inauguration of Dr. Hong Soon-cheol as the first president

### 1981.10.01

- Establishment of Gyeonggi Technical University as an open university by the Ministry of Culture and Education

### 1982.02.17

- Opening Ceremony of Gyeonggi Technical Open University with 26 majors
- Dr. Hong Soon-cheol appointed as the inaugural president of Gyeonggi Technical Open University

### 1982.12.31

- Closing of Gyeonggi Technical School as per revised decree on the establishment of national schools

### 1983.03.30

- Inauguration of Dr. Kim Ho-geun as the second president

### 1983.06.01

- Opening of a base materials inspection management center

### 1987.03.21

- Inauguration of Dr. Lee Dong-hee as the third president

### 1988.03.01

- Renamed as Seoul National Industrial University (Presidential Decree 1407 88.2.24)

### 1989.03.01

- Opening of the Industrial Graduate School
- Establishment of the University Broadcasting System

# 1990

### 1990.03.01

- Founded the School of Engineering I and II, Art & Design Department, and the Applied Fine Art Department

### 1991.03.21

- Inauguration of Professor Yoon Dae-byeong as the fourth president

### 1992.03.27

- Founded the Departments of Industrial Administration, Precision Chemical Engineering, Engineering III and IV, Humanities & Social Sciences, Natural Science
- Founded the Industrial Craft Department under the Graduate School of Industrial Engineering

### 1993.03.01

- Renamed as Seoul National University of Industry

### 1994.04.04

- Establishment of the Academic Cultural Research Foundation

### 1995.04.01

- Inauguration of Dr. Choi Dong-gyu as the fifth president

### 1997.03.01

- Opening of the Foreign Language Educational Institute

### 1998.05.01

- Renamed as Seoul National University of Technology

### 1999.03.17

- Certification for establishment of a social educational institute

### 1999.04.01

- Inauguration of Dr. Lee Jin-seol as the sixth president



# 2000

## 2000.03.01

- Founded the Graduate School of Railroad Technology

## 2000.04.14

- 90th Anniversary of SeoulTech

## 2001.03.01

- Founded the Graduate School of Housing

## 2001.09.01

- Reorganized into 6 colleges, 4 offices, 1 bureau, and 1 division
- Completion of construction on SeoulTech Headquarters

## 2002.03.01

- Graduate School of Railroad Technology and IT Design created

## 2003.03.01

- Opening of the Graduate School of IT Policy

## 2003.04.21

- Inauguration of Dr. Lee Hee-beom as the seventh president

## 2003.09.23

- Founded the Industry-Academic Cooperation Foundation

## 2004.03.01

- Founded the Graduate School of Energy and Environment

## 2004.03.26

- Inauguration of Dr. Yoon Jin-shik as the eighth president

## 2004.09.23

- Founded the Seoul Technopolis Promotion Center and Center for Engineering Education

## 2004.12.27

- Certification for establishment of the SeoulTechnopark Foundation

## 2005.07.01

- Reorganized into 4 colleges, 3 offices, 1 bureau, and 8 divisions

## 2005.11.25

- Construction of Seoul Technopolis and initiation of the NITU University Union

## 2006.01.04

- Founded the Faculty Training Development Center

## 2006.01.18

- Signed the NITU Operations and Completion Memorandum

## 2007.10.16

- Inaugurated Roh Jun-hyong as the ninth president

## 2008.03.01

- Opening of the Graduate School of NID Fusion Technology

# 2010

## 2010.09.01

- Renaming of Seoul National University of Industry as Seoul National University of Science and Technology

## 2010.10.16

- Inauguration of Dr. Namkoong Keun as the 10th president

## 2012.03.01

- Reopening as a general university
- Opening of general graduate school
- Reorganization of the academic system into six colleges
- Reorganization of the administrative system into one bureau, three offices, and nine divisions
- Establishment of four administrative offices

## 2013.04.22

- Launch of Faculty Council

## 2014.03.01

- Launch of doctoral programs in graduate school

## 2015.11.09

- Inauguration of Dr. Kim Jong-ho as the 11th president

## 2016.02.29

- Introduction of the vice president system (Executive Vice President for Academic Affairs/Research and University Affairs)
- Establishment of Lifelong Education College

## 2016.03.01

- Renaming of the NID Fusion Technology Graduate School as the Graduate School of Nano IT Design Fusion

## 2016.09.01

- Renaming of the Lifelong Education College as the College of Multidisciplinary Studies Toward Future
- Establishment of the SeoulTech Startup Support Foundation

## 2016.12.28

- Renaming of the Graduate School of Housing as the Graduate School of Housing and Urban Planning
- Opening of the University Education Innovation Center and Center for Research in Education Policy
- Opening of the Center for Gender Equality

## 2017.02.28

- Opening of the Center for Research in Liberal Arts Education

## 2017.07.03

- Opening of the Office of International Education

## 2019.03.05

- Establishment of the Board of Trustees

## 2019.11.22

- Inauguration of Dr. Lee Dong-hoon as the 12th president

# 2020

## 2020.01.01

- Renaming of the Executive VP for Research and Industry-University Affairs as the Executive VP for Research and Planning
- Establishment of the Office of Strategic Initiatives under the Office of University Affairs
- Renaming of the SeoulTech Human Resources Development Center as the Office of Career Services
- Renaming of the Lifelong Education Center as the Center for Continuing Education

## 2020.05.18

- Establishment of the Department of Applied Artificial Intelligence

## 2020.08.30

- Reorganization of the Office of Strategic Initiatives under the Office of the President

## 2021.01.08

- Establishment of the Discovery Semester System
- Adoption of new graduation requirements (EPiC system)
- Renaming of Makers College as College of Creativity and Convergence Studies
- Renaming of the Graduate School of Energy and Environment as the Graduate School of Convergence Science
- Establishment of the Student Career Services Team
- Establishment of the Center for Career Support
- Renaming of the Center for Student Life Counseling as the Center for Student Counseling
- Expansion and reorganization of the Industrial Academic Affairs Department to form the Office of Industrial Academic Research
- Expansion and reorganization of the Admissions Department to form the Office of Admissions
- Expansion and reorganization of the University Education Innovation Center to form the Office of Educational Innovation

## 2021.02.25

- Introduction of a division system into Graduate School

## 2021.03.30

- Establishment of new high-tech-related departments in the College of Creativity and Convergence Studies (Semiconductor Engineering and Future Energy Convergence)

## 2021.07.02

- Renaming of the SeoulTech Social Responsibility Organization as the ST Social Service Organization

## 2021.09.01

- Establishment of the Office of Innovation for Graduate Studies and the Convergence and Open Sharing System Center

## 2022.01.01

- Establishment of the Air Force Reserve Officer Training Corps Program

President

Board of Trustees		Faculty Senate		Faculty Council		Academic Council		Budget and Finance Committee			
Vice President of Academics					Vice President of Research and Planning						
Office of Academic Affairs		Division of Academic Affairs			Office of University Planning and Coordination		Division of University Planning and Coordination			Leaders in Industry-university Cooperation Foundation	
		Division of Educational Affairs									
Student Affairs		Division of Student Support					University Innovation Support Project Foundation			University Libraries	
		Support Center for Students with Disabilities					National University Development Project Foundation			Office of International Affairs	
		Center for Student Counseling			Office of Research Affairs		Division of Research and Industry-University Cooperation		Center for Continuing Education		Railway Academy
		Division of Admissions							Startup Support Foundation		Center for Business Incubation
Office of Educational Innovation		Division of Educational Innovation									Center for Entrepreneurship Education
		Center for Research and Educational Policy									
		Center for Teaching and Learning									
		Innovation Center for Engineering Education									
Office of Career Development		Center for Research in Liberal Arts Education									
		Career Support Center									
		Center for Cooperative Education									
Center for Information Technology											
Student Housing											
Center for Research Facilities											
Department of Disaster and Safety Management											
University Museum											
Center for Human Rights											
SeoulTech Community Engagement and Social Change Corps											
Corporate Organizations and Others											
SeoulTech Co-op											



<b>Bureau of General Administration</b>	Division of General Affairs
	Division of Finance and Property
	Division of Facilities Management
	Reserved Forces Regiment
<b>Office of Innovation for Graduate Studies</b> Ⓢ	
<b>Office of Strategic Initiatives</b> Ⓢ	
<b>Office of External Cooperation</b> Ⓢ	
<b>Center for Public Relations</b> Ⓢ	
<b>University Archives</b> Ⓢ	
<b>Center for Press and Broadcasting</b> Ⓢ	

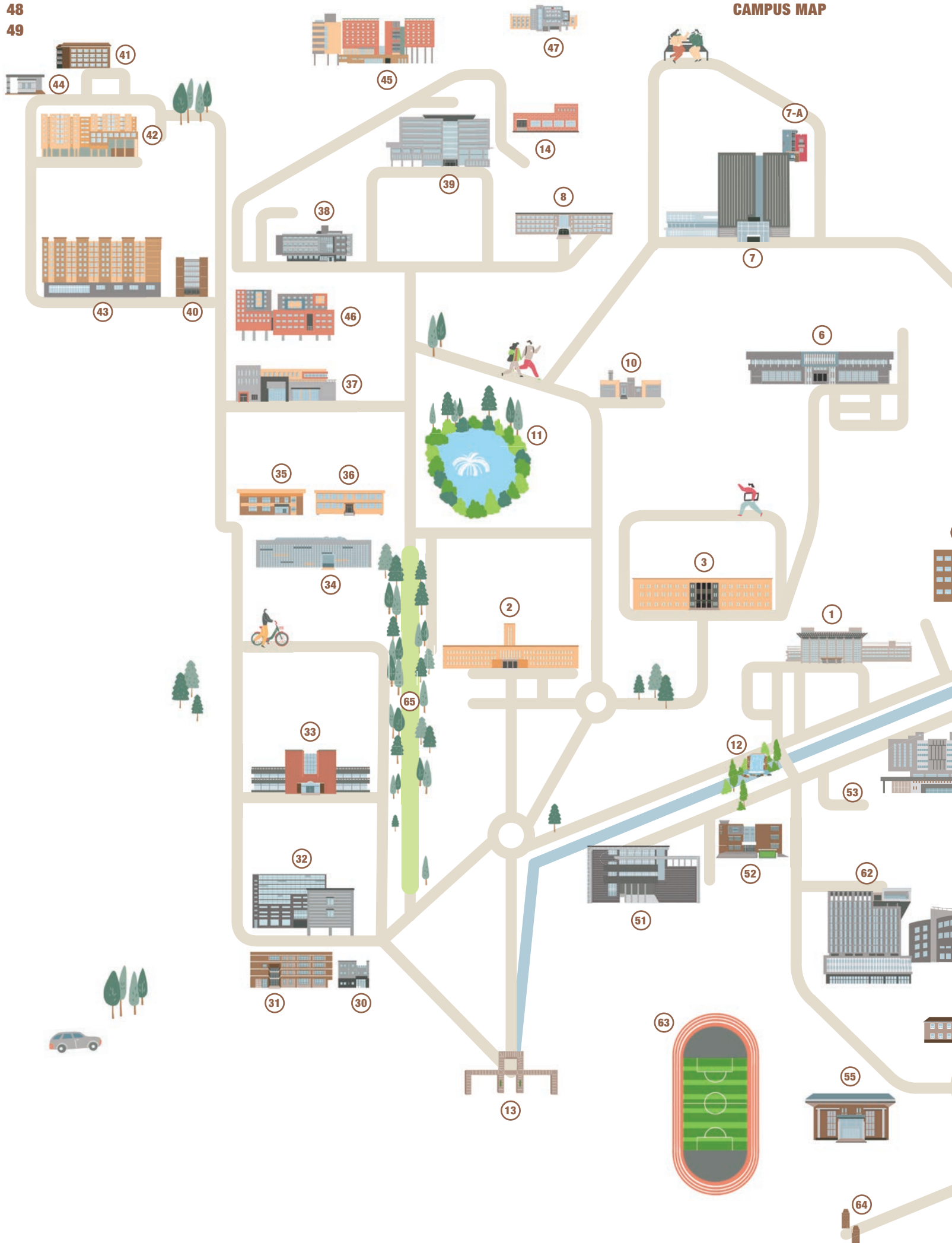
<b>Corporate Organizations and Others</b>	
SeoulTech Foundation	

<b>Undergraduate Colleges</b>	
<b>College of Engineering</b>	5 departments, 1 school
<b>College of Information and Communication Engineering</b>	3 departments
<b>College of Energy and Biotechnology</b>	6 departments
<b>College of Art and Design</b>	4 departments
<b>College of Humanities and Social Sciences</b>	3 departments, 1 school
<b>College of Business and Technology</b>	3 departments
<b>College of Multidisciplinary Studies Toward the Future</b>	2 departments
<b>Makers College</b>	3 departments
<b>Administrative Offices 1~3</b>	
<b>LiFE Project Foundation</b>	

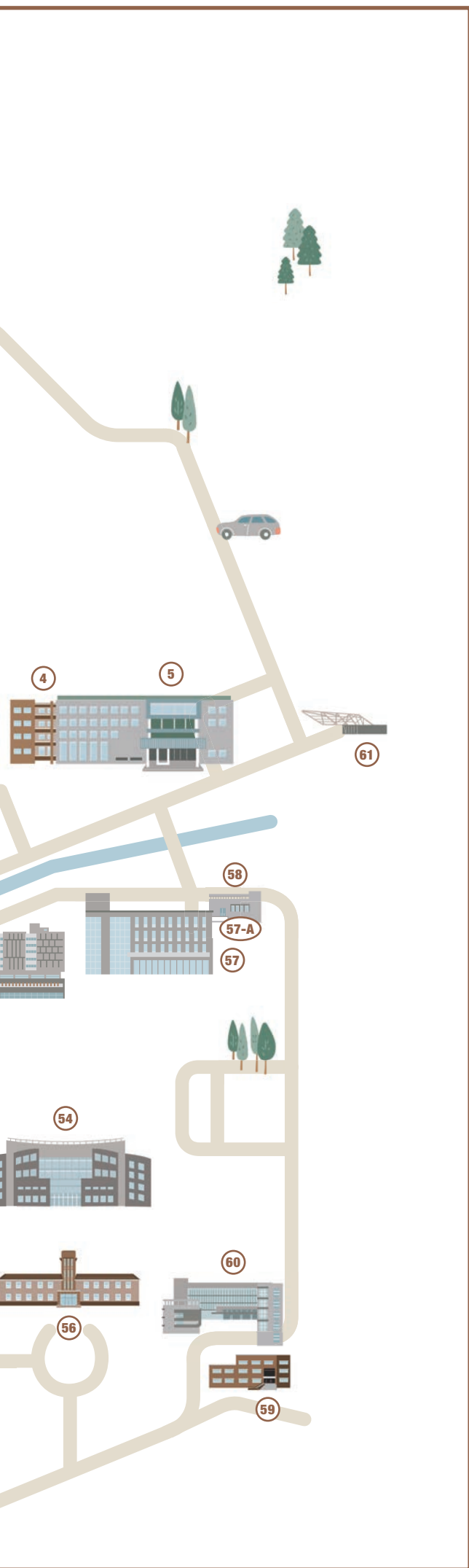
<b>Graduate Schools</b>	
<b>Graduate School</b>	
<b>Professional Graduate Schools</b>	Graduate School of Railway
	Graduate School of Public Policy and Information Technology
	Graduate School of Convergence Science
	Graduate School of Nano IT Design Fusion
<b>Special Graduate Schools</b>	Graduate School of Industry
	Graduate School of Housing and Urban Planning

<b>Support and Ancillary Facilities</b>	
Ⓢ <b>Support Facilities (8)</b>	
Ⓢ <b>Ancillary Facilities (16)</b>	

# ORGANIZATION





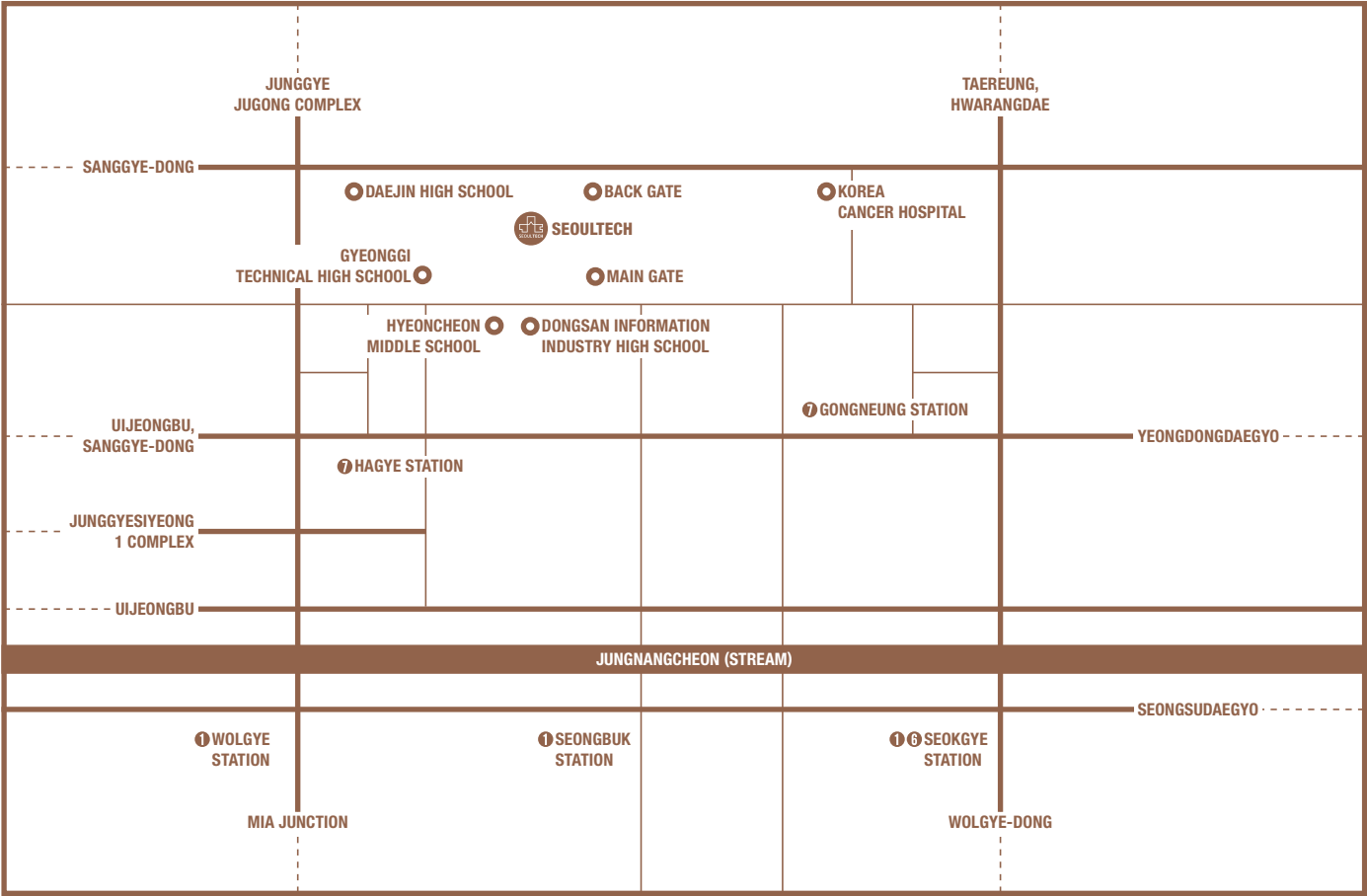


1	Administration Building	40	Eoui Hall
2	Dasan Hall	41	Buram Dormitory
3	Changhak Hall	42	KB Dormitory
4	Business Incubation Center 2	43	Seongrim Dormitory
5	Hyesung Hall	44	Hyeopdong Gate
6	Chungwoon Hall	45	Surim Dormitory
7	Seoul Technopark	46	Nuri Dormitory
7-A	Daycare Center	47	SeoulTech Academy House
8	Changjo Hall (Graduate School)	51	The 100 <sup>th</sup> Memorial Hall
10	Power Plant	52	Student Union Building 2
11	Bungeobang Pond	53	Sangsang Hall
12	Eoui Stream	54	Areum Hall
13	Main Gate	55	University Gymnasium
14	Ceramics Hall	56	Daeryuk Hall
30	SeoulTech Daycare Center	57	Mugung Hall
31	Business Incubation Center	57-A	Mugeung Hall – A (Mugeung South Hall)
32	Frontier Hall	58	Power Plant 2
33	High Tech Hall	59	R.O.T.C.
34	Central Library	60	Mirae Hall
35	Central Library Annex	61	Changeui Gate
36	Suyeon Hall	62	Techno Cube
37	Student Union Building	63	Main Playground
38	International Hall	64	South Gate
39	Davinci Hall	65	Hanghak-ro

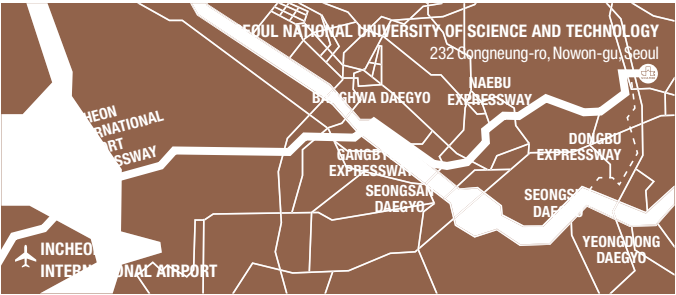
# SEOULTECH CAMPUS MAP

# SEOULTECH

# DIRECTIONS



## Incheon International Airport to SeoulTech



### Car

Incheon International Airport - Junggu, Yeonan-dong - Shinbul IC - Naebu Expressway - Bukbu Expressway - Dongbu Expressway - Hwarangro - Taereung Station - Seoul National University of Science and Technology

### Public Transportation

- Take an airport bus from Incheon International Airport to Seongsbuk, Nowon. Get off at Taereung Station.
- By subway, use Line 7 and get off at Gongneung Station. Use Exit 2 and take Village Bus #03 or #13.

### Subway

Take Exit 2 at Gongneung Station (SeoulTech Station) on Line 7	<ul style="list-style-type: none"><li>• Walk 600 meters (10 minutes)</li><li>• Take Village Bus #03 or #13 (approximately 5 minutes)</li></ul>
Take Exit 1, 4, or 6 at Seokgye Station on Lines 1 & 6	Take Village Bus #03 or #13 (approximately 15 minutes)

### Bus

Green Bus	1136, 1141, 1224, 1227
Village Bus #03 (15 minutes)	<ul style="list-style-type: none"><li>• Route: Seokgye Station (Exit 1,4,6) - Gongneung Station (Exit 2) - SeoulTech Main Entrance - Haegye-dong</li><li>• Hours: First bus 05:30AM / Last bus 00:10AM</li></ul>
Village Bus #13 (15 minutes)	<ul style="list-style-type: none"><li>• Route: Seokgye Station (Exit 1,4,6) - Gongneung Station (Exit 2) - SeoulTech Main Entrance - Da San Building - Bung Eu Bang - Parking Rotary</li><li>• Hours: First bus 05:30AM / Last bus 00:10AM</li></ul>